

WHEELABRATOR

PARADE



Gentleman farmer Jim Evans, of Electrical Engineering, and his junior assistants Jim Jr. and Joe, "at work" in the family garden.



Credit

WHERE CREDIT IS DUE

Wheelabrator is having one of its finest years.

Primarily, this is due to two fortunate circumstances: (1) the national economy is healthy and (2) Wheelabrator employees in all departments have their "shoulders to the wheel," thereby making it possible for us to compete for and get a good share of the available business.

While it would be quite simple to single out many areas of our business for well-deserved accolades, I would like to compliment two, in particular: the Steel Mill Division and the Dust and Fume Control Division.

Both of these have contributed immeasurably to Wheelabrator's upward progress this year, mainly by reason of the penetration they have made in markets that are of extreme importance.

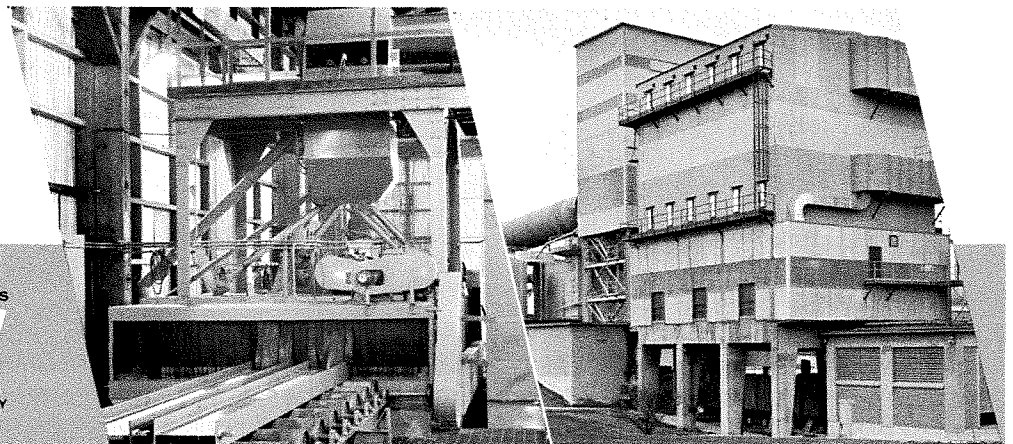
For example, Steel Division sales are up close to 500% over last year . . . real progress having been made in selling numerous units for cleaning plate, structurals, bar stock, and mill rolls.

The Dust and Fume Division put a feather in its cap, too, by turning in some very sizeable jobs in "key" markets.

Of particular interest here was a "turnkey job" in the cement industry, amounting to close to \$1 million, wherein Wheelabrator accepted complete responsibility for manufacturing, erecting and placing into operation three large dust collectors for ventilating cement kilns and a stone crusher. This will involve supervision of the entire installation, including the construction of large cement buildings for housing the dust collector elements.

Progress like this is what keeps the plant humming. It also fattens the Profit-Sharing Fund which, in 1964, should be at the highest level in many years.

James F. Conaughton
President



WHEELABRATOR
PARADE

Vol. 23, No. 4

July-August, 1964

Published for
Employees of The Wheelabrator Corporation
Mishawaka, Indiana

VITAL VALUES
W
FOR INDUSTRY



Summer Time Employees

This group of college students, children of Wheelabrator employees, are working here this summer to help defray college expenses. While they have not taken jobs from adult workers, they are performing a worthwhile function. Under close supervision, they are filling in for vacationing office workers, easing the backlog in several departments, and in general proving to be a genuine assistance to the overall operation.

Through this program of "earning-while-learning" these college students become aware of the career opportunities here and also what the local community offers its adults. Wheelabrator, through this summer-time employment program, along with its annual scholarship awards and the employee tuition reimbursement program, expects to reap dividends by providing well-trained young adults for the firm and the community.

Front Row — Sue Soens, daughter of Clarence Soens, Purchasing, Ball State Teachers College. Ruth LeMon, daughter of Mrs. Robert LeMon, Advertising, Indiana University. Kaye Berger, recent Julianna scholarship winner, daughter of Bruce Berger, Jr., Engineering, Western Michigan University. Pat Vanderbeke, daughter of Al and Vicky Vanderbeke, Machine Shop and Engineering respectively, Indiana University. Lora Evans, daughter of J. M. Evans, Electrical Engineer, Earlham College. Katherine Schulte, daughter of Harold Schulte, Chief Engineer, Indiana University.

Second Row — Tim Boenne, recent Wheelabrator scholarship winner, son of Clem Boenne, Maintenance, University of Notre Dame. David LaDow, son of Mrs. Rex LaDow, Export, Purdue. Jim DeCraene, son of Charles DeCraene, Dust & Fume Engineering, University of Notre Dame. Wayne Parker, son of Mrs. Clifton Parker, Purchasing, Michigan State.

Mike Steele, son of Ray Steele, Personnel, Layton School of Art.

Third Row — Dick Valentine, son of Vernon Valentine, Research and Development, Indiana University. Ron Seider, son of Mrs. Jack N. Seider, Dust & Fume, Butler University. John D. Bodine, son of Mrs. C. Bodine, Steel Shop, University of Virginia. Jim Van Den Avyle, recent Wheelabrator Scholarship winner, son of Albert Van Den Avyle, Cost-Accounting, Purdue University. Douglas Cook, son of Mrs. Lillian Cook, Customer Service, Purdue.

Fourth Row — Robert Stutzman, son of Mrs. Robert Stutzman, Engineering, Purdue. Curtis Girton, son of Paul H. Setzler, Vice President of Operations, Purdue. Greg Skene, son of Julius Skene, Manager of Special Equipment Sales, Purdue. Gary Snyder, son of Clyde Snyder, Research & Development, Purdue. Gordon Forbess, son of Mrs. G. G. Forbess, Abrasive, Indiana University.

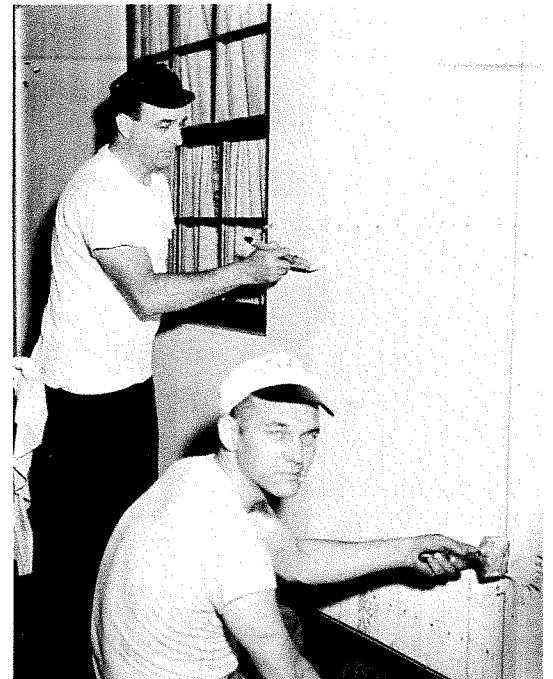


Stanley F. Krzeszewski, special assistant to the president and F. J. Pichard, vice president in charge of foreign operations conducted ten Japanese visitors on a tour of the plant in June. The visitors are members of the Japan Spring Manufacturers Association, Tokyo, and are touring various plants in the United States.

NEWS



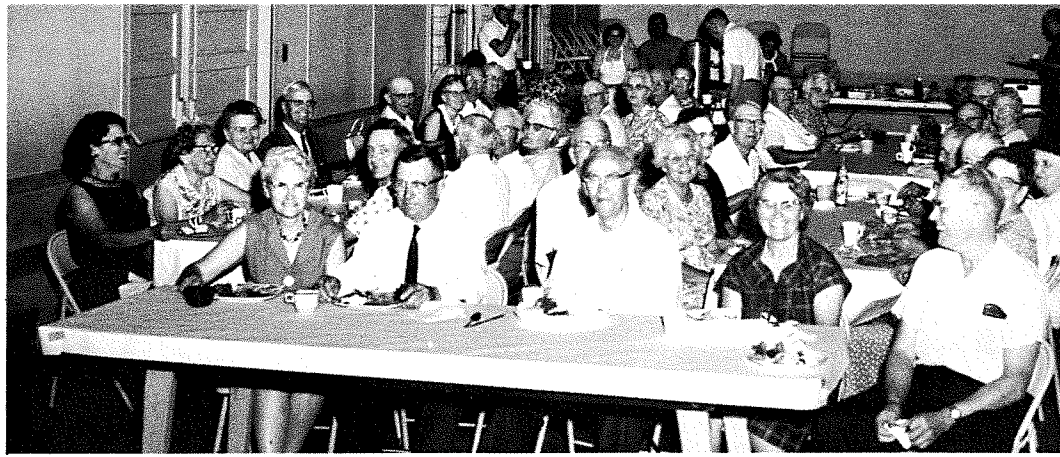
Jack Pichard, vice-president of foreign operations, explains shot peening to four French students on a five week program of working in several departments at Wheelabrator. The program is designed to give the students a better understanding of how American business operates. The students are: left to right, Bernard Lafont, Marc Bourgerly, Henri Stouff, and Jean-Claude Repolt.



About 30 members of the Wheelabrator Supervisors Club spent a day at Camp Kiloqua, the Mishawaka Camp Fire Girl's Camp at Birch Lake, readying the facilities for summer occupancy. The three pictures here illustrate some of their activities.

Above John Vasin and Bill Peterson painting the exterior of one of the counselor's cabins.

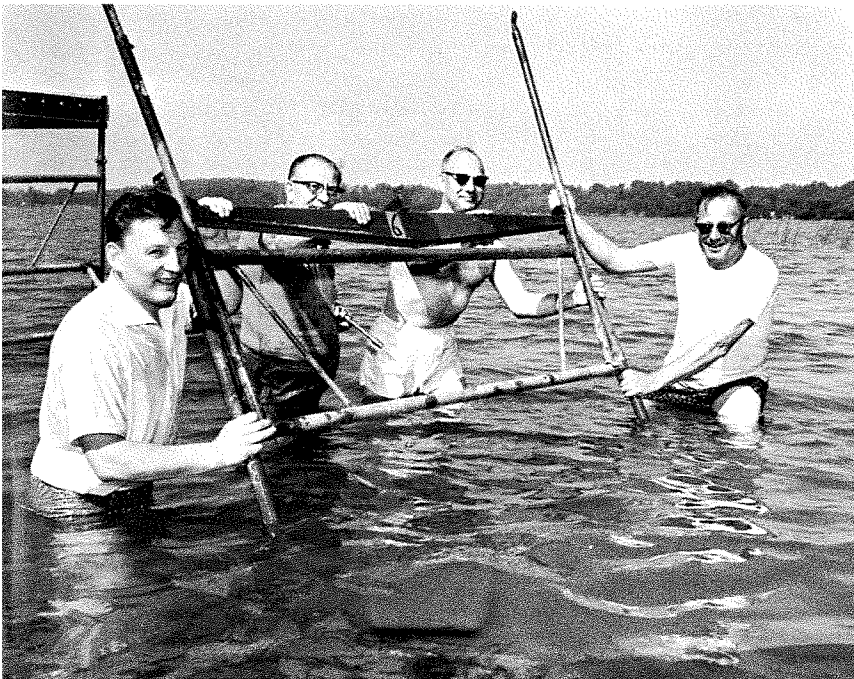
Retired Wheelabrator union personnel gather inside the shelter at Lincoln Park on a terribly rainy day for their annual picnic. The annual event is sponsored by Local 995 of U.A.W. as one of the activities for their retirees.



AND VIEWS

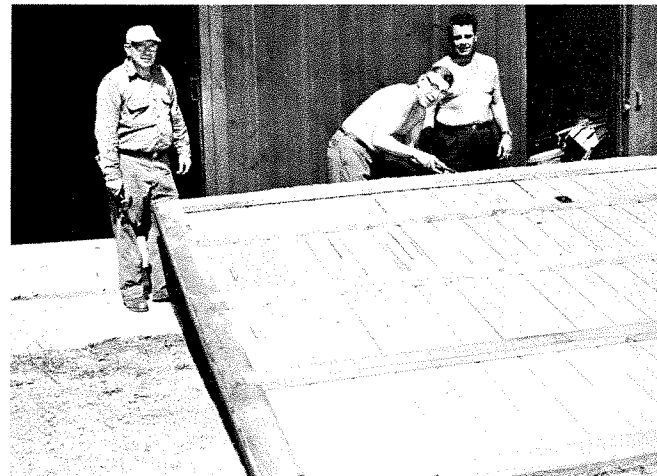


Hasmukh Shah, here from Indabrator for a 10-12 week training program, discusses assembly of a Super Tumbblast with Jack Bowers, superintendant of the assembly and erection shop.



Fred Kroll, Paul Setzler, Phil Jordan and John Farabaugh erect a section of the pier.

Norm Burch, Harold Groh and Don Rumpler work on the sliding door of the storage shed at Camp Kiloqua.



NEWS AND VIEWS

Wheelabrator Exhibit at the Air Pollution Control Association Show held June 22-25 at the Shamrock-Hilton Hotel, Houston, Texas.



Improvement begins as a drainage tile is laid to connect with the city sewer. The old hardtop surface was then scraped off and leveling work begun.



During the second stage of the resurfacing operations — applying the "binder," a heavy roller is used to prepare a solid surface for the finish asphalt mix.



After strips and directional arrows were painted onto the asphalt surface and concrete stops were laid, the lot was opened to Wheelabrator personnel.



Charles Barrett and Fred Day examining some of the fabrics manufactured by Barrday, Ltd.

Wheelabrator Expands in Canada with the Purchase of Barrday, Ltd.

Company manufactures
filtration media
used in air pollution
control equipment

Fred Day and Charles Barrett standing alongside one of the textile machines in Barrday, Ltd. plant, which was purchased by Wheelabrator Corporation of Canada, Ltd.

THE WHEELABRATOR CORPORATION, Mishawaka, Indiana, announced the purchase of Barrday, Ltd., of Galt, Ontario, Canada, manufacturer of filtration media used in air pollution control equipment.

James F. Connaughton, president of Wheelabrator, said Barrday will be operated by the company's Toronto subsidiary, Wheelabrator Corporation of Canada, Ltd.

Mr. Connaughton continued, "Barrday's product line will effectively complement the air pollution control equipment sold by our Canadian affiliate."

Barrday also weaves synthetic fabrics used by a high percentage of industrial filtration equipment. Fabrics manufactured by the company on its own looms include nylon (carrying the trade name Terylene in Canada, Dacron in the United States); polyethylene and polypropylene; also Saran, Dynel, Fiberglas and Orlon. The finished cloth is woven in various yarn forms: staple yarns, multi- and mono-filament yarns, and ribbon yarns.

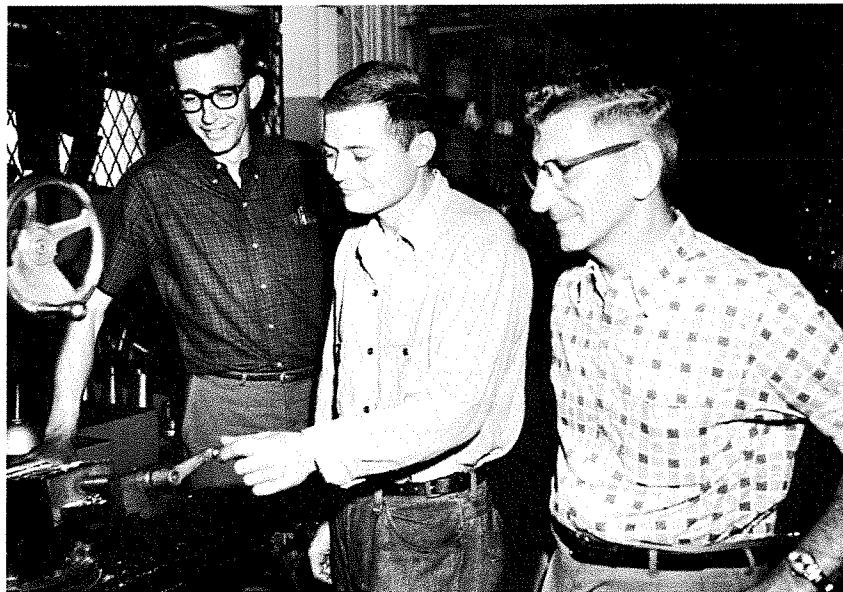
A plastic wire weave, a proprietary product of Barrday carrying the trade name "Flexmesh", is employed by the mining, chemical and food refining industries for a number of filtration applications.

Barrday markets both finished filtration media, and fabric yardage. Finished media is used on all types of dust and fume collection equipment; for water purification, both commercial applications such as sewage filtration and for such recreational products as home and community swimming pools; and by the pulp and paper industry. The Galt company also manufactures a line of "splatter curtains" used on commercial dishwashing equipment.

Barrday's founders, Charles Barrett and Fred Day, will continue as president and vice president respectively of Barrday. Robert A. Campbell, vice president and general manager of Wheelabrator of Canada, will serve as executive vice president of Barrday.



44 YEARS of WHEELABRATOR SERVICE



JOSEPH WEINKAUF

MICHAEL WEINKAUF

GREG THOMPSON

Michael Weinkauf and his brother, Joseph, pose with Michael's father-in-law, Greg Thompson, near a lathe in the Machine Shop. The trio has spent forty-four years and has handled fourteen different jobs at Wheelabrator.

Among the scores of family teams working at Wheelabrator, this trio of relatives has compiled a service record of 44 years of employment. The combination consists of a father-in-law and two brothers — Greg Thompson and Joseph and Michael Weinkauf.

The old-timer in the group is Greg Thompson, night foreman in the Machine Shop, who started here on September 28, 1936. His first job was in the old electric heater department which, all old-timers will remember, left Mishawaka many years ago for Rochester, New York and is now the Electromode division of Friden Corporation. He subsequently switched over to machine shop operations working on practically every type of machine until he was made a foreman.

The second in the trio, Joseph Weinkauf, didn't realize this family team would materialize when

he started here in 1953. His first employment was in the mailroom which was interrupted by a four-year stint in the Navy. Upon his return he switched to the plant stock room. Presently, he is a follow-up control clerk.

When Joe's younger brother Michael was seeking employment, he naturally sought out Wheelabrator. He was hired on May 25, 1959 as a material handler. In the six years he has been here he has progressed to milling machine operator — Class I. In the meantime he married Greg Thompson's daughter to form a family team.

This is another example of the many existing family relationships which have been characteristic of Wheelabrator's employee structure.

To paraphrase a popular phrase, "As one man tells another," Wheelabrator becomes an even better place to work.

What makes the BIG difference?

THE BIG 10% of Wheelabrator's Gross Profits
Paid into your Profit-Sharing Account

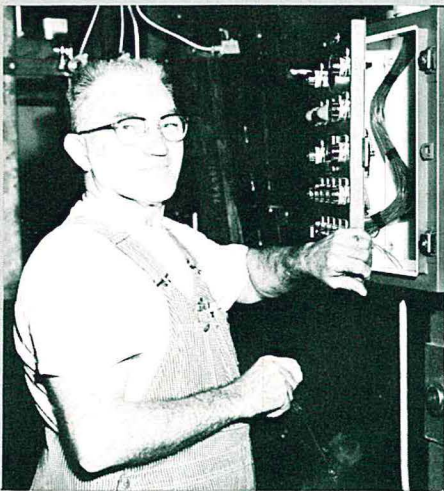
- A BIG Way to finance your retirement years
- A BIG Step to financial security and independence
- A BIG Lift to piece-of-mind about your future

ON THE JOB



JOHN WOODRUFF
CARPENTER

John started his Wheelabrator career in May 1941 in the steel yard. Since then he has served in make-up, on the jigger, in dustube layout, in the shot plant and now in his present duties. A native of Mishawaka, John attended Mishawaka High School. He is married to the former Derniece Larimer, and they have three sons, Danny 18, Pat 15, and John 9. John's favorite pastimes include trap shooting and coin collecting. He exhibits an active interest in the Mishawaka Conservation Club and the various activities of the membership.



RALPH E. BANES
ELECTRICIAN

Ralph started his Wheelabrator career in July 1939 in the steel shop. After two years, he became a production electrician. This has been Ralph's work for nearly a quarter century. Ralph is a native of Monon, Indiana, although he has lived in Mishawaka since 1923. He is married to the former Frances M. Seitz of Mishawaka. Their two children, Ralph Jr. and Betty Lou, are both married. Ralph Jr. teaches at Kennedy School. Betty Lou and her husband have a farm near Marion, Indiana. Ralph includes among his hobbies following baseball on television and hunting and fishing.

Sintokogio President is Honored

Mr. Kakichi Nagai, president of Wheelabrator's Japanese affiliate, Sintokogio, Ltd., was recently presented with the Blue Ribbon Medal, the highest industrial award bestowed in Japan.



Mr. Kakichi Nagai, Sintokogio president, accepts Japan's coveted Blue Ribbon Medal.

Upon receiving the award, Mr. Nagai was granted an audience with His Majesty, the Emperor Hirohito, who expressed his gratitude to Mr. Nagai for his outstanding contributions to Japanese industry. Mr. Nagai was also given the extreme honor of a tour through the Imperial Palace.

"All of these events will be my lifelong honor," said Mr. Nagai in a letter to Mr. F. John Pichard, vice president of Wheelabrator's foreign operations.

The award cited Mr. Nagai for "years of serious efforts in research and development of manufacturing techniques in the foundry equipment manufacturing industry," and for, "contributing greatly to the public welfare."

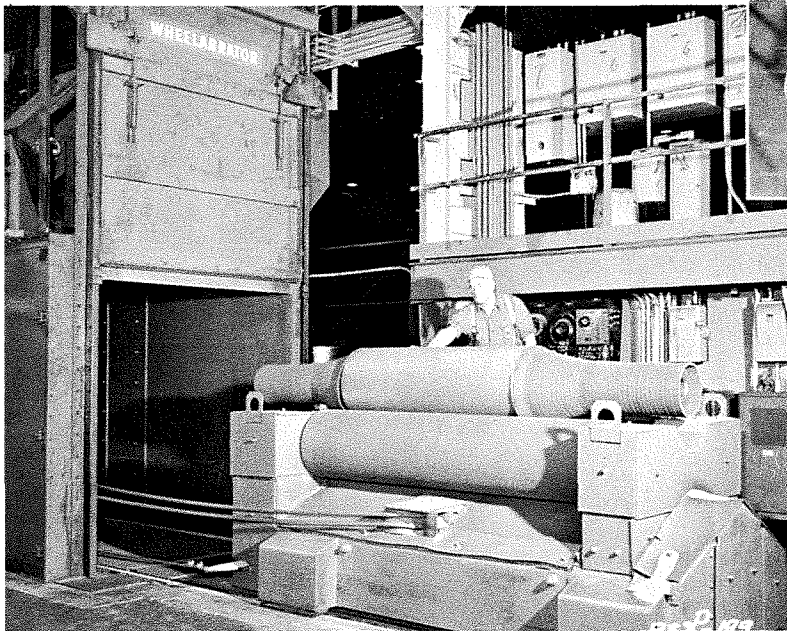
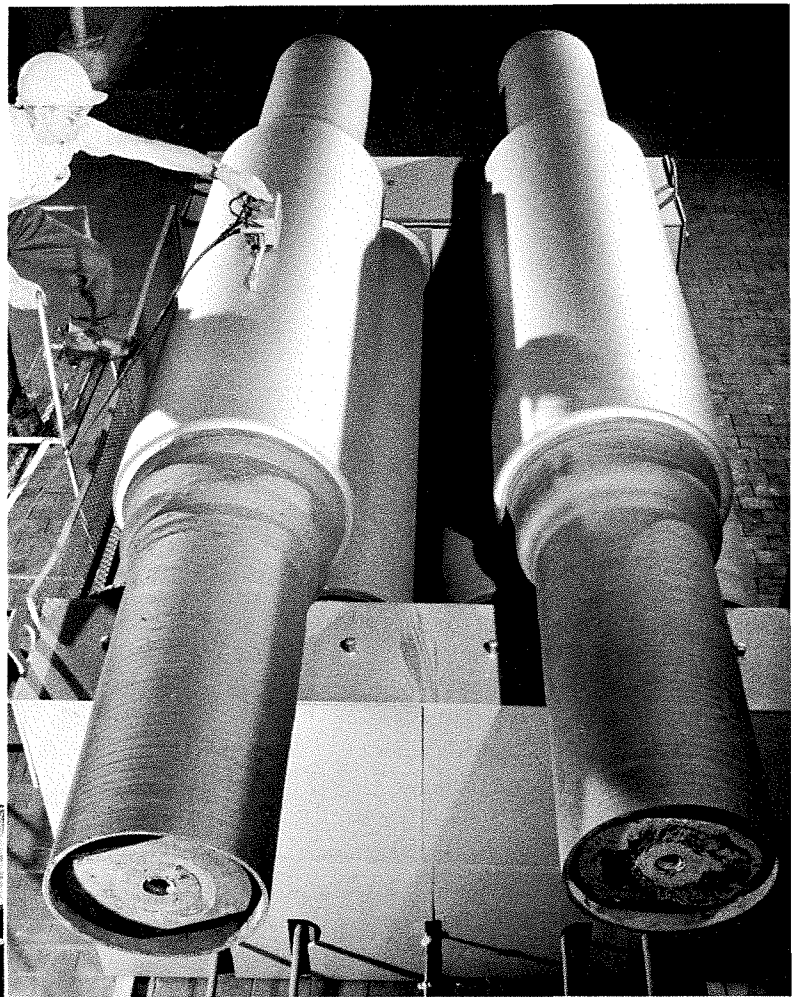
Under Mr. Nagai's expert leadership, Sintokogio has become the foremost foundry equipment firm in Japan. Japanese business analysts have called Mr. Nagai one of the brightest business leaders in Nagoya, which is a booming industrial center.

Mr. Nagai serves as member of the Economic Advisory Committee to the Japanese Cabinet, is secretary to the Chubu Committee for Economic Development, and holds a variety of industrial association directorships.

This is the first time that the Blue Ribbon Medal has been awarded to a man in the foundry equipment industry.

Etching Steel Mill Rolls

ANOTHER COST CUTTING
APPLICATION FOR THE
WHEELABRATOR



Wheelabrator installations installed in prominent steel mills for etching mill rolls. In the above view an operator checks the surface obtained by the grit blasting. At the left is shown a typical installation with a large roll on the work car.

When steel mill customers such as tin can manufacturers or automobile producers order cold rolled steel strip or sheet they request that it be furnished with a finish suitable for the application. The desired finish is obtained by cold rolling the steel through a series of huge rolls, each of which has been etched to a specific surface roughness.

The success of the process thus depends upon the uniformity of the etch on the rolls. Here is where the Wheelabrator fits into the picture.

Many years ago, etching of mill rolls was done by airblasting the rolls with steel abrasive with

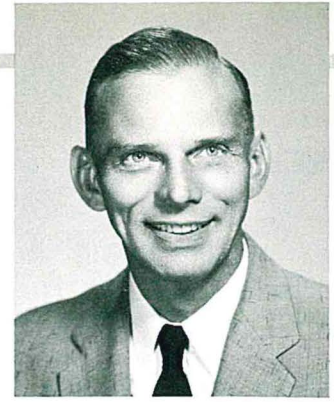
generally unsatisfactory results both as to uniformity of etch around the entire roll and also in production attained. Today more than 40 Wheelabrator cabinets are in operation in steel mills for this purpose. Steel abrasives are still used but there the similarity ends.

Either one or two rolls are placed on a work car which carries the rolls into the cabinet to be rotated in the abrasive blast zone. All operations are automatically controlled to insure perfect results. An unlimited number of etch finishes can be attained through automatic selection of the steel grit.



CHARLES BENHAM
Florida Agent

Meet the Field



ROBERT TURNBULL
Service Engineer

"Charlie" outranks all of us . . . 54 continuous years of service with the company since 1909. He has run the gamut of jobs from Supervisor, Factory Superintendent, Sales and Service, District Manager, and presently as Agent for Wheelabrator in Florida.

Looking back over the years he mused recently, "I have spent a lifetime with the company and every minute of it has been interesting and profitable."

In spite of his 75 years, Charlie is still "young at heart," being active in a number of civic and religious organizations. He is a director of both the Tropical Club and CONA, Sarasota civic groups. Charlie is also assistant Civil Defense Warden for his community. He belongs to all Masonic bodies, including the Shrine.

Charlie and his wife, Alice, reside in Sarasota. They have two married daughters, Kathryn Carpenter and Avis Catlin. The couple celebrated their 50th wedding anniversary on April 11th of this year.

Bob Turnbull joined Wheelabrator on April 1, 1937 as a mechanic in the experimental department. Four years later Bob was appointed to a field service position in the Chicago territory where he remained until January, 1954 when he was transferred to the Western sales region, with headquarters in Los Angeles. In addition to handling sales and service in this area, Bob also supervises the warehouse which Wheelabrator maintains in the district.

Bob is the son of David Turnbull, former chief engineer for Wheelabrator. He is married to the former Betty Leuthold, a classmate of his at Mishawaka High School. The couple has four daughters, Janet, Kathleen, Jill and Kim. Janet and Kathleen, the two eldest girls, are attending colleges in the Los Angeles area.

Aside from active membership in the Methodist Church, Bob spends most of his free time with his family.

WE KNEW HIM WHEN



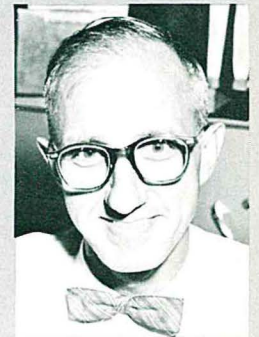
HAROLD GROH

Harold began his career at Wheelabrator in 1935. He has worked on the Tumblast assembly line as a field service man and in demonstration until 1942. He spent the next two years at the Dodge Manufacturing Plant as a supervisor for Wheelabrator on a sub-contract calling for partial construction of Wheelabrator Tables by Dodge. Later, after a brief period in research on the development of steel shot, Harold became district service engineer in Indiana. He returned to the steel shop as a foreman in 1960 and has been in that position since.

Married to the former Doris Hull, the family consists of two sons — Donn and Mike. Donn, who is married, lives in Mishawaka. Mike will be leaving home in September to enroll at Manchester College. Harold is a member of F.O.E. No. 1083, Mishawaka Lodge No. 130, F. & A.M., South Bend Valley Scottish Rite, Supervisor's Club and East Methodist Church.

Golf, bowling, and his three grandsons are among Harold's list of hobbies.

GENE DICKERSON

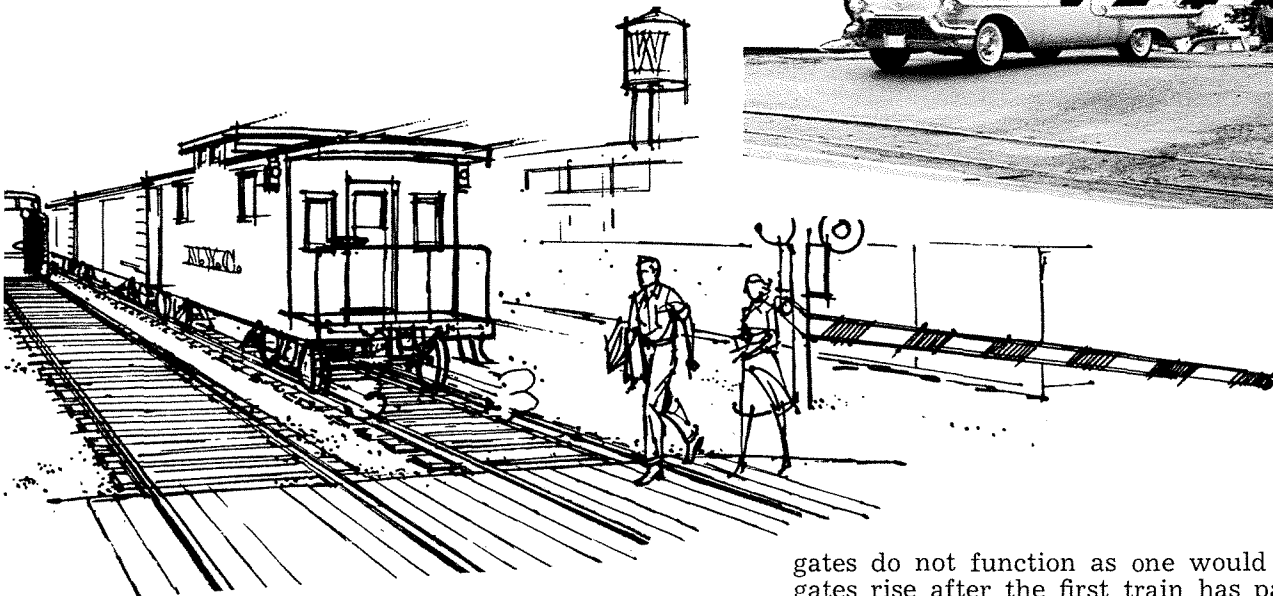


Gene joined Wheelabrator in 1940. He started in the stockroom as a material handler. He became follow-up man for cabinet assembly and then was given additional responsibility for the service of bills of materials and ordering of stock for the assembly of equipment in 1946. In September of 1958, Gene became head of the stockroom.

Married to the former Aline Vogler, who once worked in Parts Service, the Dickerson family also consists of sons Gary, John and David and a daughter, Susan.

Gene enjoys gardening, cooking and golfing. He helped organize the first company golf league and was secretary for several years. He is active in the Supervisor's Club and the Athletic Association.

Your Life is in DANGER!



PARADE can't imagine a person working at Wheelabrator being oblivious to the railroad crossing nearby.

For two weeks in July most of us were forced to walk around the crossing due to its being repaired, or else step highly over the exposed steel rails. As one fellow put it, "It ain't the driving to and from work nor the job that gets me tired. It's the problem of getting across the tracks that wears me out!"

Well . . . now that the repair work has been completed . . . it seems an opportune time for PARADE to point out how much danger there is in negotiating the crossing! Most of us are once again speeding over the tracks like ten-year-olds chasing the ice cream man!!

There are three apparent threats to a person's safety at the crossing. After several days of observation, correspondence with the N.Y.C. Safety Department in Cleveland, Ohio, and hearing testimonials from people who have been observed by Plant guards and officials nearly getting themselves killed, PARADE is able to elaborate on the three dangers.

First, there's the fact that no set schedule exists for trains in the area. According to Mr. T. Wheeler, General Yardmaster for N.Y.C., trains can be running any direction at any time and passing alongside one another at any point on the tracks at any time. Thus, as is frequently the case at our crossing, one train can scarcely be through the crossing when another begins to enter it. In this case the

gates do not function as one would expect. The gates rise after the first train has passed by, although the second train is near the crossing.

Secondly, there is the danger that exists due to the fact that the switch engine coming into the Plant delays traffic at the crossing. Drivers and pedestrians alike are reluctant to wait for the switch engine to complete its operation, so they attempt to drive through the crossing by pulling around the protective gates, although they do not know for sure whether any trains are approaching the crossing. Although the percentages for those getting across safely are high, it still remains incontestable that the risk assumed is very great. PARADE thinks it wise to point out at this time that it takes a loaded freight train going 40 miles per hour over a half-mile to come to an emergency stop.

Thirdly, the crossing remains hazardous simply because of the high speeds at which most trains are traveling. Speeds up to 80 miles per hour are not uncommon. Thus, when drivers attempt to pull onto the tracks immediately after the train passed by on the tracks closest to them, they could easily find themselves pulling into the pathway of a train that had been kept hidden from them by the first train.

Although the same danger exists for those on foot, they seem to be better able to sense the danger of the second train. However, it is not wise to stand too close to a passing train. According to Mr. L. Blewer, Director of Safety for N.Y.C., the tracks are weaker at a crossing than at any other point. This causes greater vibration which could result in objects being thrown from the train or off the rail bed.

WHEELABRATOR TRAP SHOOTING CLUB

Awarded Trophies

The popularity of the Wheelabrator Trap Shooting Club belies the old belief that trap shooting is a rich man's sport. Five years ago a group of trap shooting enthusiasts approached the Wheelabrator Athletic Association for support. Approval was given, the Mishawaka Conservation Club facilities were engaged, and the sport was off to a running start.

The number of Wheelabrator participants has grown every year. Meeting regularly from February through June, the Club has now completed its fifth season. At its last shoot of the spring, trophies were awarded to the two top teams and individual winners.



Members of the Trap Shooting Club and their friends look over the trophies that were awarded to the two top teams and the individual top shooters. ROW 1 (from left to right): Tom Doty, Mrs. Richard Murphy, Mrs. Tom Kirkpatrick, Steve Kirkpatrick, and Tom Kirkpatrick. ROW 2: Dick Murphy, Russell Oak, Clyde Hickman, Rick Kanouse, Bill Doty, and Gene Rumpf. ROW 3: Jerry Pratt, Tom Pratt, Ken Bidlack, Jim Haines, Bill Cholosinski and Bill Doty, Jr.

If you've never witnessed a trap shoot, the description may be helpful. The trap shooter endeavors to hit with a shotgun blast a small clay disc, called a bird, which is thrown from a machine into the air in various directions. If you think it's easy, come out next year and try it. At least, you'll find it to be a most enjoyable sport.



F. JOHN PICHARD

Pichard Named Vice President of Foreign Operations

F. John Pichard has been appointed Vice President of Foreign Operations of Wheelabrator Corporation to succeed Richard E. Kelley who has joined American Machine & Foundry International, Ltd., in a senior executive capacity.

Mr. Pichard has been associated with Wheelabrator since 1952 in various sales and marketing capacities, the first of which was as field sales engineer in the Eastern Region. In 1957 he was made Manager of Standard Equipment Sales, and for the past several years he has served as Director of Marketing.

After graduating in 1942 with a degree in Mechanical Engineering from Stevens Institute of Technology, where he also earned a Master of Science degree, he was associated with Westinghouse Electric Corporation and Foxboro Instrument Company.



Passing PARADE

Goin' Fishin' Instead of Just A-Wishin'

Jack Baugher and **Bill Hass** returned recently from a fishing trip in Canada. The two men spent most of their time fishing for Walleyes . . . **Duff Watson** took his family to East Twin Lake for a week's stay at Bob Bunch's resort near Rose City, Michigan. Bob is a former Wheelabrator Sales Engineer. **Gene Phelps** and his wife were at the resort, and Duff and Gene, the latter a neophyte at ichthyology, teamed-up to try to catch the prize large mouth bass. As it turned out, both Duff and Gene were duped by Duff's eight year old son, who landed a 14" Large Mouth . . . **Karl Smith** returned again this year with his family to Indian Lake at Manistique in Michigan's Upper Peninsula. Karl reported the fishing was not what he would have liked it to have been. He did catch a Hummingbird, however, and saw some nice country . . . **Jim Smith** and his wife stayed near Charlevoix, Michigan during their vacation. Both are from Charlevoix originally. Jim was quite successful fishing on Adam's Lake and also enjoyed taking a boat trip to an island, which is not inhabited, with his wife in his company . . . The list of anglers goes on and on and includes such names as **Ray Good**, **Andy Federnok**, **Al Van Den Avyle** and **Larry Vanderbosch**.

. . . .

Robbye and **Bob Lennox** spent their vacation moving into their new house in River Park. Least enjoyed was the work involved in painting the living room . . . **Bud Wolff** is especially proud of a low 33 score on the back nine at Eberhart Municipal Golf Course . . . **Judy Rallo** spent a week in Atlanta visiting her parents . . . The writer flew to Los Angeles recently to attend his sister's wedding and to spend a few nights out on the town.

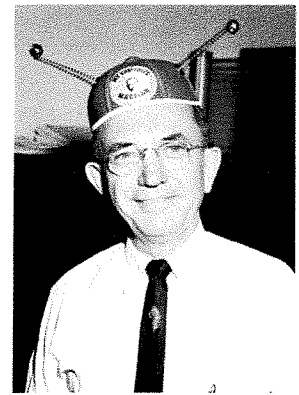
(Fred Nix, Office Service)

. . . .

Will and **Fran Burdakin** and their son have just returned from a week's vacation at Daytona Beach, Florida . . . **Charles Benham** and his wife are planning a trip to Fletcher, Ohio, Old Lynn, Connecticut and Longmeadow,



Mary Lee Millemon opening her Julianna Club gift prior to her wedding July 11th to Tom Holsinger.



Ardee Freeman models a new electronic sound receiving helmet presented to him by his secretary to permit her to be in constant touch with her shop-wandering boss.

Massachusetts. The couple will most likely visit Mishawaka before returning to their home at Sarasota, Florida . . . **Bill** and **Dot Scherrer** will spend part of their vacation in South Bend so that Bill can participate in the 12th Annual Invitational Golf Tournament at Morris Park Country Club . . . **Doug Call** is hard at work in Dallas, Texas, while his wife and three children enjoy a vacation at Gloucester Banks, York River, Virginia.

(Mabel Murff, Southern Region)

. . . .

John Harris Jr. was recently elected precinct committeeman in his district . . . **Paul Brower** spent a week in Arkansas getting his farm ready for the day after he retires . . . **Howard Hummel** tried out his new fishing gear and caught a 25" Northern.

(Milferd Gardner, Steel Plant)

. . . .

Les Paharic, **Gail Pringle**, **Rip Ostrum** and **Bob Ashburn** recently returned from a fishing trip on the Chipewewa River, south of Hayward, Wisconsin. Highlight of the trip was the near landing of a Muskie by Leo . . . **Jim Powell** and his wife will vacation in Michigan at their cottage on Manistique Lake soon . . . **Walt Stegman** and his wife and son returned recently from Dallas, Texas.

(Walt Stegman, Plant II)

. . . .

Del Canarecci, **Virginia Heinzman** and **Julie Ciszczon** attended the "500" together this year . . . **Tony Kruszewski** took his family on a vacation in Cleveland and Canada . . . **Joan Schue** and her mother flew to Los Angeles. They visited with relatives in the area.

(Willa Mae Parker, Accounting Dept.)

CANADIAN CLASSICS

The gala event of the early summer for Canadian employees, occurred on June 11th when our annual golf tournament was held at Pickering Golf Course. Senior employees **Bob Campbell** and **Alex Horne** were unable to attend as was the correspondent (home with an infected throat) but the weather was perfect for golf and all participants thoroughly enjoyed the afternoon match. Our golf "pro" **Ernie McLaughlin** took top honors as he walked off